

RM41300

4U High Performance Industrial Server Chassis



Rear View

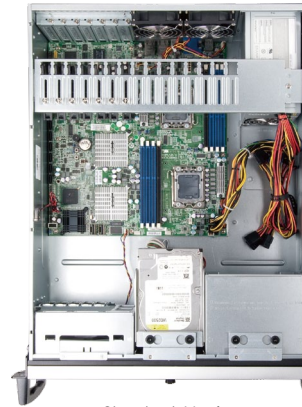


RM41300



RM41300G

Inside View



Standard Version
(RM41300)



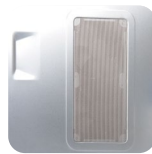
GPU Version
(RM41300G)



8-slot for
4 x GPU cards
(RM41300G)



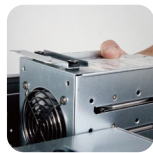
Anti-vibration drive
cage design



Side panel with
2 x 120mm fans
(RM41300G)



Easy-assembly front
120mm fan with filter



Easy-assembly
internal drive cage
for 4 x 3.5" HDDs



Optional 1200W PS2 PSU
(RM41300G)

Front View



w/o Bezel (RM41300-C)

Front View



1-door bezel



2-door bezel

Features & Benefits

- Support M/B up to 12" x 13"
- Support 8-slot rear window for 4 GPU cards (RM41300G)
- Truly isolated anti-vibration design on internal HDD and drive cages
- Second3 x 5.25" drive cage for maximum configuration flexibility (optional)
- Dedicated 80mm fan for HDD cooling
- Card retainer to hold low profile and full height add-on cards (RM41300)
- Support stand-alone installation via optional kit (RM41300)
- Support 1-door or 2-door front bezel configuration (RM41300)

Specification

Model Name	• RM41300 / RM41300G
M/B Form Factor	• Extended ATX (12"x13")
Dimension (D x W x H)	• 546 x 430 x 176 (mm), 21.5" x 16.9" x 6.9"
Drive Bay	• Exposed: 3 x 5.25", 1 x 3.5", 1 x Slim ODD; Internal: 4 x 3.5"
PSU Form Factor	• PS/2 Single or Mini-redundant
Indicator	• 1 x Power Status, 1 x HDD Activity, 2x LAN Activity
Front Control	• Power On/Off, Alarm Mute, System Reset, 2xUSB2.0
System Security	• Intrusion Switch, Key lock on front door
Cooling Fan	• Front: 1 x 120mm (T=25mm), PWM • Rear: 2 x 80mm (Option)
Slot Opening	• 7,8 (RM41300G) or 15 x Full Height and Full Length
HDD Backplane	• N/A
Metal Thickness	• 1.2mm
Net Weight	• 12.5kg
Gross Weight	• 15.5kg
Front Bezel	• Option
Cubic Feet	• 4
Container Info (Single Packing)	• 20': 224, 40': 476, 40'H: 544

Optional Items

	Order Code	Description
Storage Kits	◆ Note1.	2.5" or 3.5" HDD storage kits
Cable	84H341310-012	3.5" Bracket with 2-port USB3.0 cable
Slide Rail	84H341300-002	26", Ball Bearing
Drive Cage	84H342310-003	3x5.25" + 1x3.5" Bays
	84H342910-012	2x5.25" + 2x3.5" Bays
Bezel	84H341310-004	One-Door Type
	84H341310-005	Two-Door Type
◆ Note1. SK41203 / SK51102 / SK51201 / SK32303 / SK33502 SK31101 / SK41101 / SK41202		

※ PSU ※ M/B Support ※ I/O Gasket ※ Air Duct ※ (Detailed in CHENBRO websites)

Order Information

Order Code	M/B	Backplane	Cooling Fan(mm)	PCI Slot	PSU	Bezel	Slide Rail
RM41300-C	12"x13"	N/A	Option	7 x FF	Option	w/o bezel	Option
RM41300-F2	12"x13"	N/A	1x12025	7 x FF	Option	2-door	Option
RM41300-FS81	12"x13"	N/A	3x12025+2x8025	8 x FF	Option	1-door	Option